




## Southeast Public Health Leadership Institute



THE UNIVERSITY  
of NORTH CAROLINA  
at CHAPEL HILL

THE SOUTHEAST PUBLIC HEALTH LEADERSHIP INSTITUTE (SEPHLI) provides cutting edge public health leadership development training to the present and future leaders of public health working in the states of Arkansas, North Carolina, South Carolina, Tennessee, Virginia, and West Virginia.



“SEPHLI has enabled me to work **more effectively** with my co-workers, as well as community members. My organization, as well as the community at large, will reap **significant benefits...**”

—Roy Crewz  
*District Epidemiologist, Virginia Department of Health*

#### THE SOUTHEAST PUBLIC HEALTH LEADERSHIP INSTITUTE PROVIDES

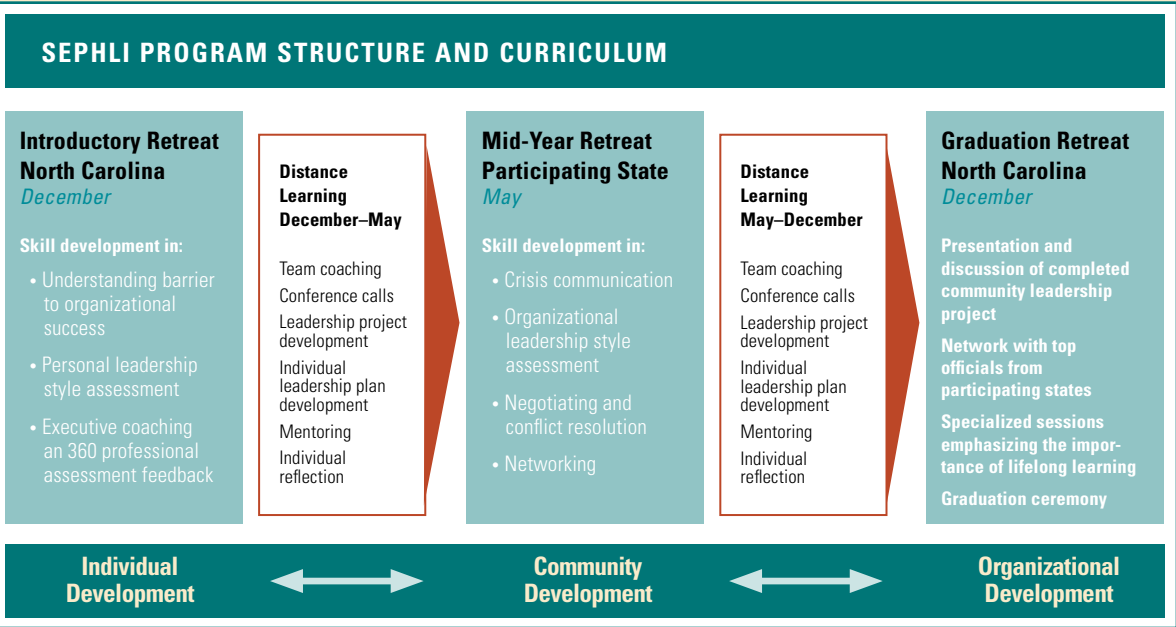
- Access to nationally and internationally renowned public health leaders
- Insight into your personal leadership style through self assessments and faculty-led exercises
- Enhanced skill in risk communication, leading change, building collaboration and sharing organizational vision
- Extensive networking opportunities with top public health professionals from your region



# CURRICULUM

The Institute's curriculum is designed to develop the skills and competencies of leadership in eight broad core skill areas.

- Self-Awareness and Personal Development
- Visioning and Futuring
- Critical Thinking — Systems Thinking and Problem Solving
- Partnerships and Collaborative Efforts
- Communication
- Political and Social Change Strategies
- Coaching and Mentoring
- Ethics



## Faculty

Institute sessions are facilitated by nationally recognized public health leaders and executive trainers. Past faculty members have included: Stephanie Bailey, Keith Caver, Vincent Covello, Kristine Gebbie, Janet Porter, Dennis Lennaway, and Bill Roper.

## Who Should Attend

Senior to mid level managers, or low to mid level managers showing outstanding commitment and promise in public health, with at least five years of public health experience and at least one year current tenure in a local, district or state public health department are eligible to apply.

A small number of positions are also available each year to exceptional candidates from outside of traditional public health settings.

## Contact Information

Southeast Public Health Leadership Institute  
NC Institute for Public Health, School of Public Health  
The University of North Carolina at Chapel Hill  
Campus Box 8165  
Chapel Hill NC 27599-8165

Office: 919.966.4032  
Fax: 919.843.5563  
sephli@unc.edu

## Fees

Tuition includes instruction, materials, on-site retreat accommodations and meals.

The University of North Carolina at Chapel Hill offers SEPHLI with funding support from the Centers for Disease Control and Prevention and the five partnering states.

## How to Apply

Applicants may register online by August 31 at [www.sephli.org](http://www.sephli.org). For more information, please call 919.966.4032.

